



CHRISTMAS EXHIBITION



Petit Déjeuner à Voudenay by **Aldo Balding** Oil on canvas 27.5" x 20"

Please join us for the Private View of our

CHRISTMAS EXHIBITION

*Thursday 5th December
from 6.30pm - 8.30pm
at our Bristol Gallery*

All welcome, refreshments will be served
All works are available for purchase on receipt of this brochure

**Exhibition will continue until 21st January
Tuesday to Saturday, 10am - 5pm**

Front Cover - *Dawn, Ardtoe* by **Rose Strang SSA** Mixed media on wood panel 11" x 14"



Lime Tree Gallery

84 Hotwell Road, Bristol
BS8 4UB
Tel: +44 (0)117 929 2527
info@limetreegallery.com
www.limetreegallery.com
Tuesday to Saturday: 10am - 5pm



Some Part of Silence I by **Peter Wileman FROI RSMA FRSA** Oil on canvas 31.5" x 31.5"

CHRISTMAS EXHIBITION

A wide-ranging, strong and vibrant exhibition for the Christmas season.

As always, we will be selling a diverse range of 'painterly' paintings by notable contemporary artists, with a good selection of works suitably sized and priced for Christmas presents.

Aldo Balding, Mike Carter, Andrew George, Ian Humphreys, Barry Kelly, Jane Kite, Alan James McLeod, Alison McWhirter, Teresa Pemberton, Helen Sinclair MRBS SWA, David Smith RSW, Trevor Sowden, Rose Strang SSA, Malcolm Taylor PS VPMAFA RBA, Peter Wileman FROI RSMA FRSA.

Introducing a fine new series of Welsh coastal paintings by Sian McGill.

We also have a beautiful collection of glass and sculpture as well as some lovely jewellery by Moa Smith, all ideal for Christmas presents or even as a treat for yourself.



Blue Table with Jug and Fruit by **Teresa Pemberton** Oil on canvas 12" x 12"



Late Summer Sky by **Barry Kelly** Oil on canvas 12" x 12"



Dusk, Sanna Bay by **Rose Strang SSA** Mixed media on wood panel 14" x 11"



Common Lobster by **David Smith RSW** Watercolour 16" x 21"



Made Fast by **Malcolm Taylor PS VPMAFA RBA** Mixed media on board 10" x 10"



The Light Rises by **Alan James McLeod** Gouache and metal leaf on paper 22" x 16"



Serenity by **Andrew George** Egg tempera on gesso board 8.5" x 7.5"



Ynys Llanddwyn by **Sian McGill** Acrylic on board 16" x 16"



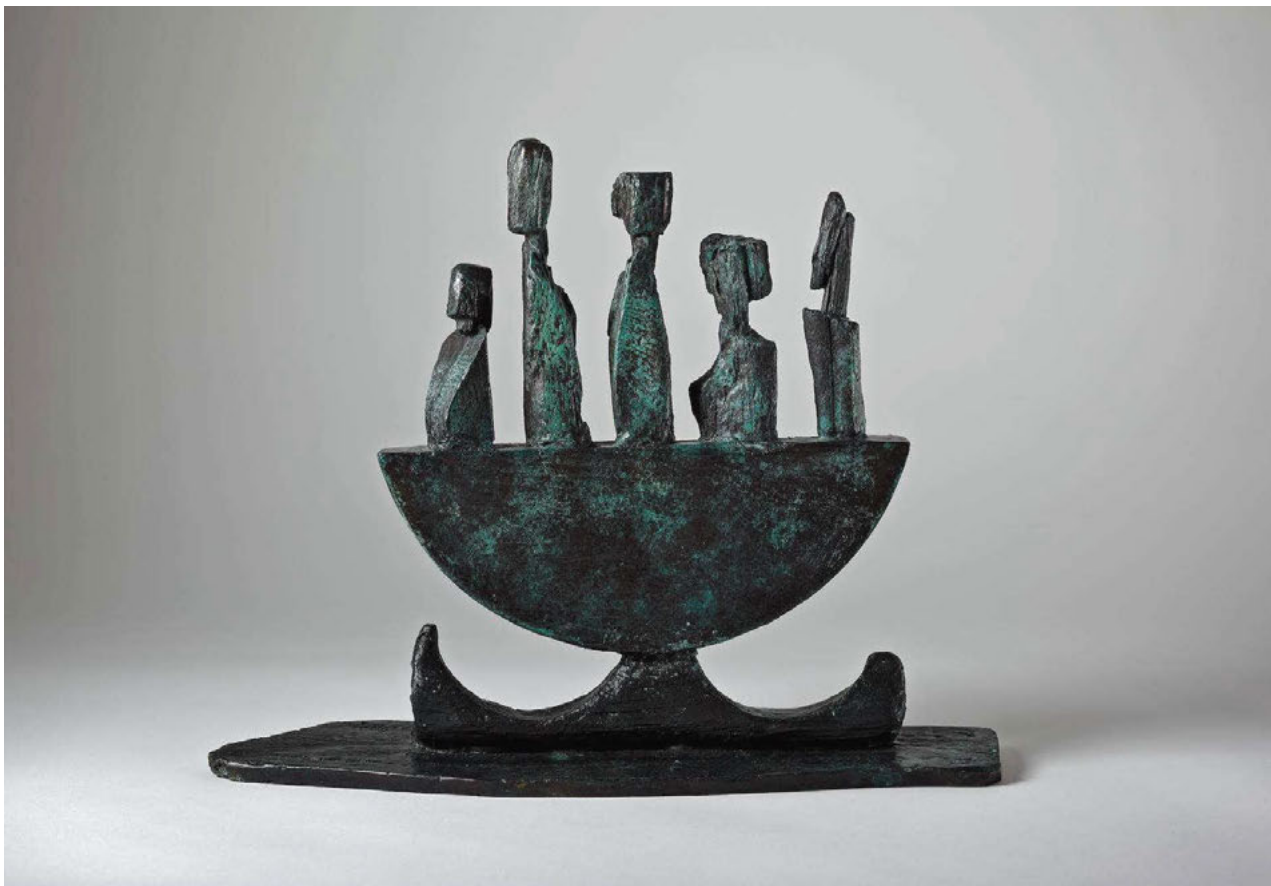
Shoreline by **Teresa Pemberton** Oil on panel 10" x 12"



Mathilde by **Trevor Sowden** Mixed media on paper (unframed) 10" x 7"



Sabrina in Shadow by **Aldo Balding** Oil on canvas 21.5" x 18"



The Skellig Boatmen marquette by **Helen Sinclair MRBS SWA** Bronze Artist's cast of edition of 9 10" x 13.5"



A Different Kind of Blue by **Mike Carter** Mixed media on canvas 16" x 20"



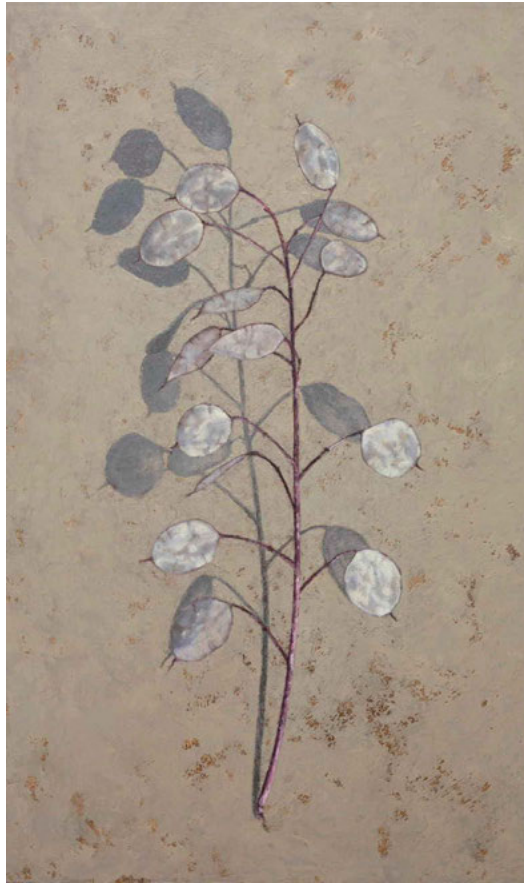
Pink Roses by **Alison McWhirter** Oil on board 16" x 16"



White Whisp by **Barry Kelly** Oil on canvas 12" x 12"



High Summer by **Malcolm Taylor PS VPMAFA RBA** Mixed media on board 16" x 16"



Honesty by **Jane Kite** Oil on board 18" x 11"



Tiles by **Alan James McLeod** Gouache and metal leaf on paper 15" x 15"



Porthgain by **Sian McGill** Acrylic on board 20" x 20"



The Seas Dance by **Mike Carter** Mixed media on canvas 16" x 20"



Twilight, Harris by **David Smith RSW** Oil on canvas 32" x 32"



Strike by **Ian Humphreys** Oil on paper 12" x 14"



84 Hotwell Road, Bristol BS8 4UB | Tel: +44 (0)1179 292 527 | info@limetreegallery.com

www.limetreegallery.com